

Strict and Advanced Key Management can be Realized.

KEY MANAGEMENT SYSTEM PKS SERIES



(Key holder 30 pcs)



Easy Removal

Key holder can be removed by card or passcode authorization.



Flexible Settings for Each User

Key removal can be restricted per each card or ID depending on the security level.



Easy Check

You can see on the display who is using the key.



Block Unauthorized Use

The key holder is automatically locked as soon as it is returned to its original position.

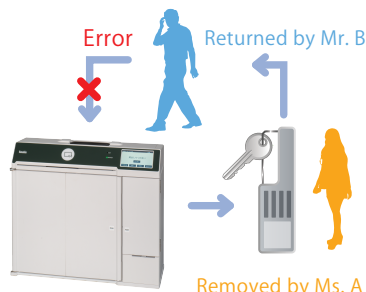
Only permitted key holders can be used after ID authorization with your card and passcode. On the LCD display and the PC via LAN, you can check the usage status stored in the internal memory.

Variety of management functions

It is possible to set the timer to make an error when the key is not returned within the set time (Timer settings), and to set not to take out the key outside the set time (Timercode). The unauthorized use can be blocked by restricting the use of keys according to the time. In addition, various settings such as allowing only the person who take the key out to return it, or making it possible to take it out by authenticating with two people, are possible.



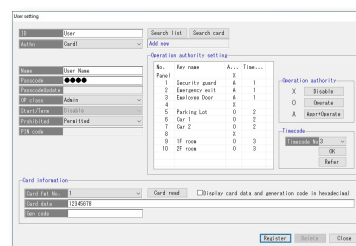
Available to set
the front panel opening time.



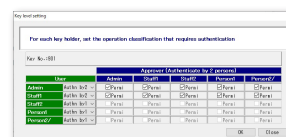
Stringent management
with ID authentication

PKS Management Software facilitates strict management

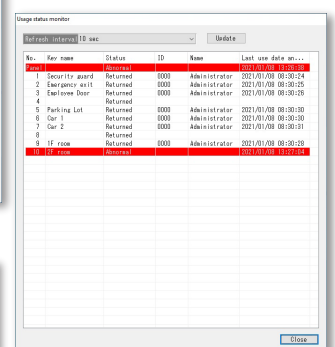
PKS can be connected to a PC via LAN. You can register, change, delete, and inquire user settings, master settings, and various settings, as well as input and output user data on the PKS Management Software on PC. The software makes it easy to perform operations such as settings and save histories.



User information



Key level setting



Usage status monitor

External alarm input/output

Front panel forced-open and device error can be informed to the external device. Simultaneous unlock can be also performed through input signal.



50,000 events can be recorded

It is possible to record each operation such as key holder removal/return, front panel opening/closing and various errors.

Kumahira

Product Lineup

The number of key holders



PKS-10
Key holder : 10 pcs



PKS-20
Key holder : 20 pcs



PKS-30
Key holder : 30 pcs

Card readers Option

In addition to JISII type magnetic card reader, the device can be equipped with MIFARE card reader. If you already have compatible cards, you can use them as ID card.

JIS II

Magnetic card

MIFARE

Contactless card



Magnetic card



Contactless card

Basic specifications

Key Management System PKS Series				
Model		PKS-10	PKS-20	PKS-30
External dimensions (mm)		W454mm ×D150mm × H410mm※1		
Net weight (kg)		Approx. 8.8kg	Approx. 9.4kg	Approx. 10.0kg
Key holders		10 pcs	20 pcs	30 pcs
Front panel		Electrical lock. Foldable type		
LCD indicator		4.3-inch color LCD touchscreen		
Option	Magnetic card reader (JIS II)	Supported format : Card encoded based on JIS X 6301, JIS X 6302 type II		
	Contactless card reader (MIFARE)	Supported format : Card type: Kumahira standard, Serial No. (with/without authentication key), User card, Ultralight serial No., Ultralight user card		
Card registration		Max. 1,000 pcs (including master card) ※Master card can be registered up to 100 pcs.		
Internal memory		Internal memory: Max. 50,000 events Memory battery backup time: Approx. 6 years. (Cumulation in power OFF state)		
Internal clock		Calendar: until 2099		
External I/O		External input: 1ch (Wet contact : ON when inputting DC5 to 24V) External output: 2ch (Dry contact NO/NC switch)		
Interface		LAN connection: RJ45 (10BASE-T / 100BASE-TX) × 1		
Power supply		AC220V (190V-250V: including voltage variation) 50-60Hz with grounding		
Consuming power (Rated capacity)	Peak	11W (27VA)	15W (33VA)	18W (41VA)
	Standby	5W (18VA)		6W (19VA)
Environment		Operation environment: Indoor 0℃～40℃ No condensation Storage environment: Indoor -25℃～60℃ No condensation		
PKS Management Software		PC : Laptop/ Desktop that meets the following requirements. Drive: CD-ROM drive (Required for installation)		
Operation environment		OS: Windows10Pro (64bit) Memory: 1 GB or more (The system requirements of OS must be met.) Display: Display resolution should be 1024x768 or higher		

※1. External dimension does not include protruding parts such as hinges and rubber feet.

※"MIFARE" is a registered trademark of NXP Semiconductors. ※"Windows" is a registered trademark of Microsoft Corporation.

The specifications are subject to change without notice. The actual color may be different from one of the photo.

Contact Us

<https://www.kumahira-safe.com/>

Manufactured by

Kumahira Co., Ltd.

1-42 Ujina-higashi 2-chome,
Minami-ku, Hiroshima, 734-8567 Japan
Tel : 81-82-252-7009
Fax : 81-82-253-7928

